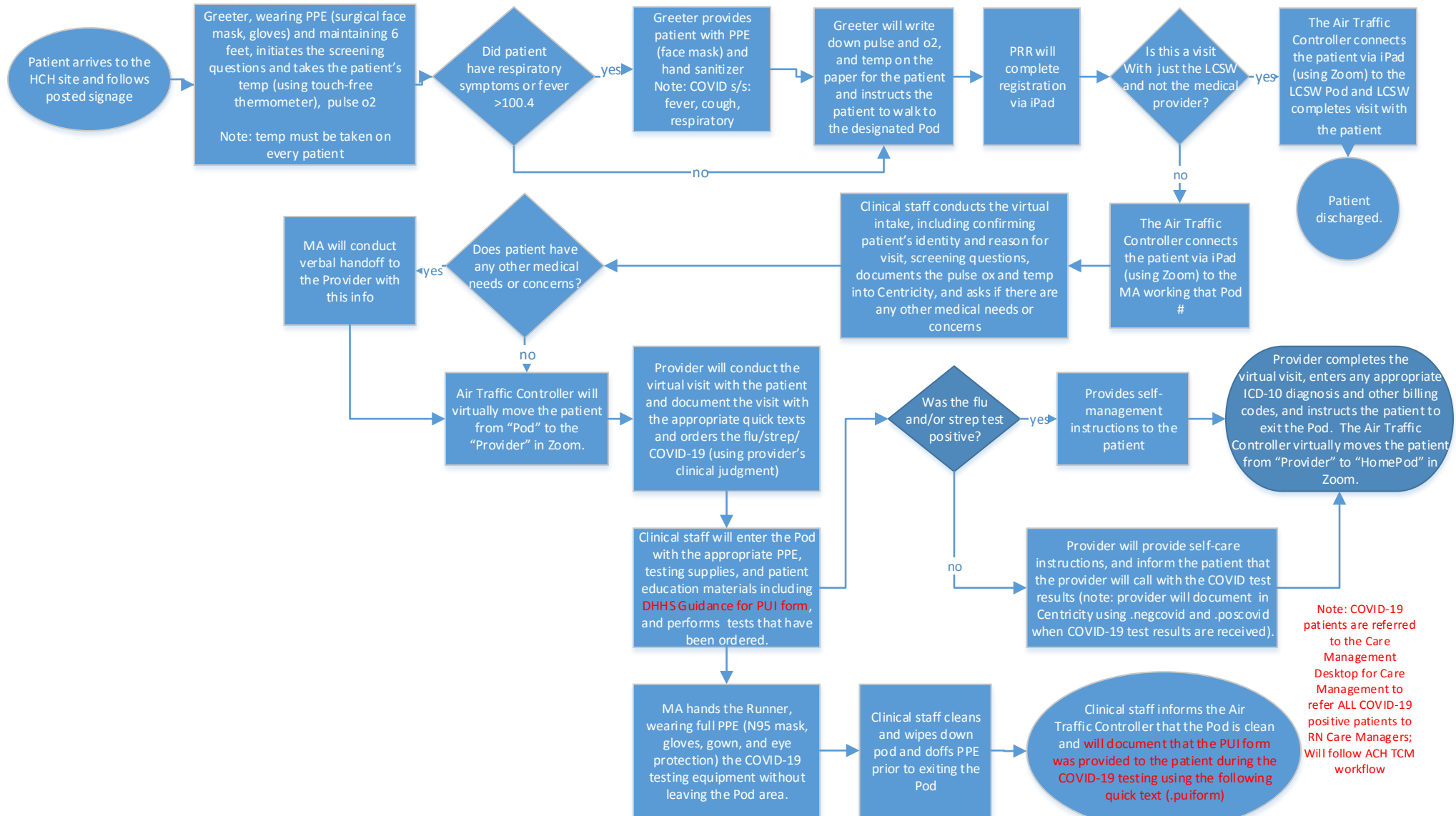


# Advance Community Health Healthcare for the Homeless (HCH) COVID-19 Workflow Model

Updated 05/06/2020 (version 6)



Note: COVID-19 patients are referred to the Care Management Desktop for Care Management to refer ALL COVID-19 positive patients to RN Care Managers; Will follow ACH TCM workflow

The .puiform quick text reads:  
"Patient received DHHS PUI form during COVID-19 testing performed by the health center and patient verbally consented to the guidelines set forth."