

CHAMP

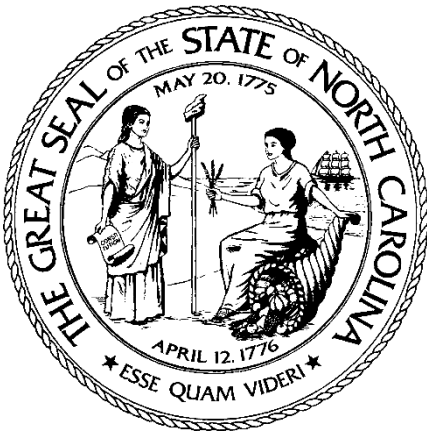
Community (testing in)

High-priority

And

Marginalized

Populations



Deck will be updated with new vendors
and awards as they are made.

CHAMP Leadership Team

Shannon Dowler, Lead (DHB)

Sonya Beatty, Contract Manager (DCD)

Johnathan McEachin, Vendor Manager (ORH)

Jessica Nance, PM (ACC)

Brin Phillips, APM(ACC)

Donnamarie Baldwin, Business Operations (OIA)

Dianne Enright*, Data Analysis Co-Lead(DPH)

Rebecca Slifkin*, Data Analysis Co-Lead(DHB)

Amanda Van Vleet(DHB)

Elizabeth Freeman(ORH)

Erika Ferguson(DHHS)

Linda Rascoe(DHB)

Scott Shone(DPH)

Wrenia Bratts-Brown*,**(DHB)

Carrie Brown (DMH)

Elyse Powell (DMH)

Jennifer Morillo(DPH)

Maribeth Wooten(DPH)

Victor Armstrong(DMH)

Kelly Crosbie*,**(DHB)

Edwina Thompson*(DHB)

Erica Wilson(DPH)

Lakeisha Moore*,**(ORH)

Sabrena Lea(DHB)

Victoria Mobley(DPH)

Sam Thompson*(DHB)

*denotes Steering Committee

**denotes Evaluation Committee

Why CHAMP?

Recognition that core public health infrastructure needs additional resources to meet the growing pandemic testing needs across the state

Lengthening turnaround time for test results driving the need for new sources of tests to get results rapidly to people tested

Desire to reinvest resources into communities and focus on trusted community partners serving historically marginalized populations

Growing evidence that COVID health disparities are untenable; to drive equity a disproportionate share of resources must be committed to marginalized populations

Key Tenets to Testing Strategies Historically Marginalized Populations:

- must include ordering provider at site of testing
- testing provider must be able to follow the patient to manage results
- must include culturally competent staffing and education on site
 - ideally includes staff diversity at testing sites
- do not deny testing based on insurance or payment
 - must provide bilingual testing facility staff
- must ensure follow up education, linkage to needed resources, and ongoing medical needs
- must provide testing facilities in geographically accessible and trusted locations

Achieving health equity in our test requires investing in and directing a d amount of resources to vulnerable

Historically Marginalized Population Workstream Testing Recommendations May 2020

High Risk

codes with rolled e testing

E/MCO data, identify zip codes concentration of severe, persistent ness and deploy mobile testing to those communities.

icaid data, identify non skilled ngregate living environments rge scale testing in these communities.

Communities of Color Strategies

Partnering with faith based communities or civic organizations to offer on-site testing opportunities at trusted community sites including historically black colleges and universities(HBCU) and minority serving entities.

Use NC DHHS epidemiologic data to focus testing outreach in areas with a higher concentration of positive COVID cases and/or deaths and a dearth of testing.

Utilize Healthy Opportunities geomapping data to identify zip codes and communities with higher resource needs as well as living at or below 300%

Front Line

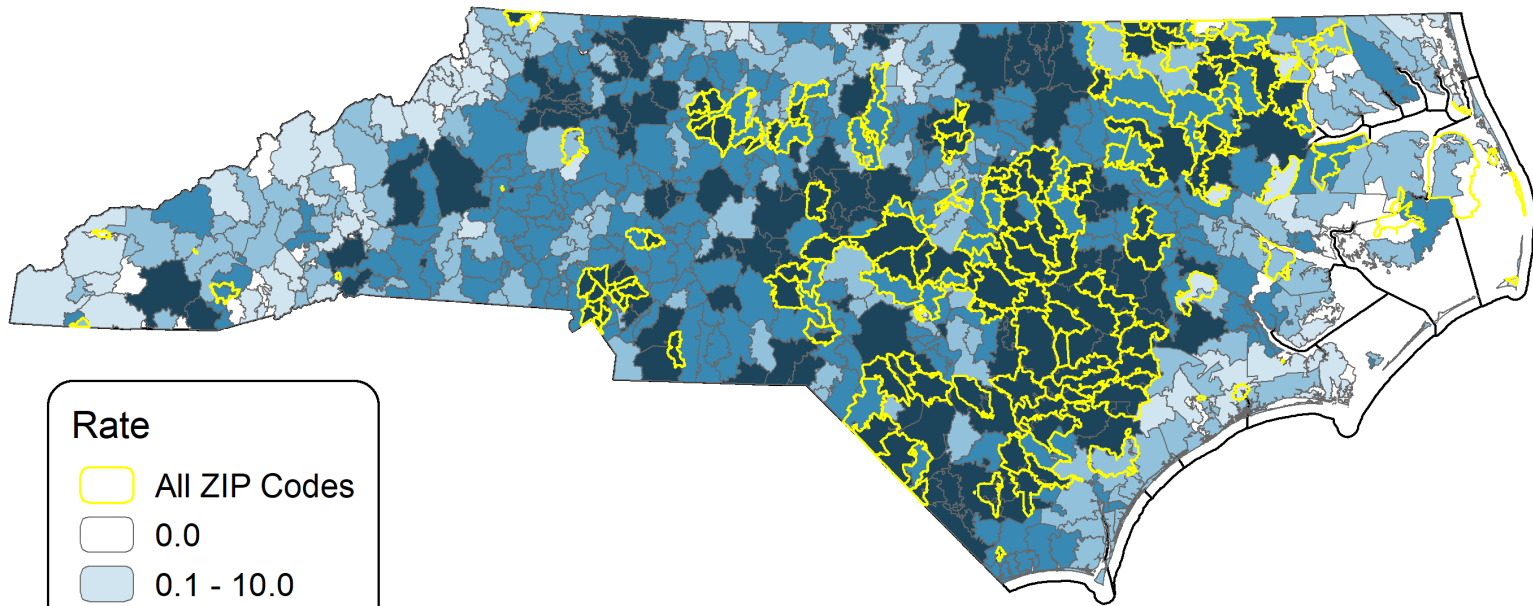
Engaging v provide t near oper plants, f mai

Engaging v commerci or eas

CHAMP Summary

- >100 Zip Codes prioritized across NC in geographies with relatively high population concentrations of historically marginalized communities AND (at time of analysis) no testing sites located in that zip code
 - Additional considerations applied such as percentage of population >65 with 2 or more chronic conditions and large presence of construction and farm workers in zip codes
- Covers a 3-week period (with optional renewal if deemed necessary by DHHS)
- Meets “High Throughput” Definition, which is ability to test at least 100 people at each site and hold up to 10 sites a day across the state
- First round of CHAMP awarded to Orig3n and Vidant Health to majority of zip codes; remaining zip codes will be awarded ASAP
- Testing will take place from 7/8 to 7/29 with possibility to extend based on success of vendors and need in communities
- Testing must be done at NO COST to attendees; insurance and HRSA portal will be billed as appropriate but no co-pay or cost-sharing will be applied
- Additional CHAMP rounds will be awarded in early August to new set of zip codes pending data analysis

CHAMP Round 1 Priority Zip Codes (Data Analysis performed 6/17/20)



Rate

- All ZIP Codes
- 0.0
- 0.1 - 10.0
- 10.1 - 25.0
- 25.1 - 50.0
- 50.1+



CHAMP TIMELINE as of 7/1/20



**Task Order
released
6/26/20 5pm**



**Q&A Complete
6/30/20 5pm**



**Vendor
Submissions
DUE 7/1/20
5pm**



**Vendor
Evaluation
7/2/20**



**Vendors
Notified of
Selection
7/3/20

Contracting
7/6/20**



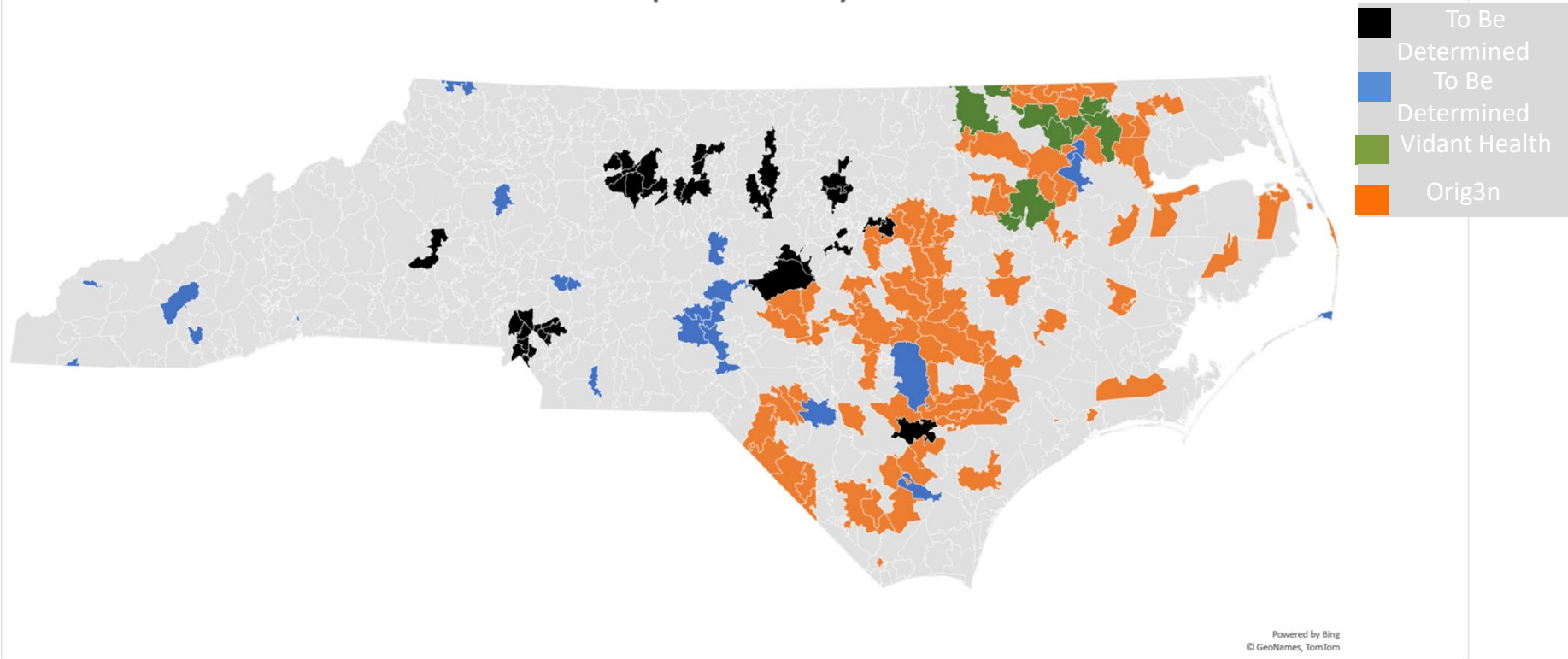
**Testing
7/8/20
through
7/29/20**

**Evaluation
Complete and
Public
Reporting of
Results
8/5**

Unique Task Order Features

- Must identify primary care provider (PCP) and provide results of test to the patient and to PCP
 - Vendors required to connect person to PCP if they do not have one
- Must partner with community agencies and leaders
 - County must be alerted prior to event
 - Culturally and linguistically appropriate marketing must be provided in advance of events
 - Vendor must demonstrate community partnerships
- Vendors will be penalized for:
 - Failure to provide culturally and linguistically appropriate services
 - Failure to collect and report race and ethnicity data
 - Visual screen allowable
 - Failure to attempt to report tests to patients in timely fashion (under 24 hours from result)
- In addition to data requirements, sites will be evaluated for contractual performance by a DHHS Secret Shopper program
- Must provide face coverings to people presenting to testing who do not have a face mask

CHAMP Zip Codes by Vendor



If you are in an awarded zip code, please reach out directly to the awarded vendor:

Vidant jacob.parrish@vidanthealth.com

Orig3n kate@orig3n.com

2.5 Will be awarded by 7/13/20

3.0 Will be awarded by 7/18/20

ZIP Code	Vendor	Zip Counties	ZIP Code	Vendor	Zip Counties	ZIP Code	Vendor	Zip Counties
27101	Op9 - TBD	Forsyth	27823	Orig3n	Edgecombe, Halifax, Nash	28308	Orig3n	Cumberland
27103	Op9 - TBD	Forsyth	27826	Orig3n	Hyde, Tyrrell	28310	Orig3n	Cumberland
27105	Op9 - TBD	Forsyth	27831	Orig3n	Halifax, Northampton	28323	Orig3n	Harnett
27106	Op9 - TBD	Forsyth	27832	Vidant	Halifax, Northampton	28325	Orig3n	Duplin
27107	Op9 - TBD	Davidson, Forsyth	27840	Orig3n	Bertie, Martin	28326	Orig3n	Cumberland, Harnett, Lee, Moore
27127	Op9 - TBD	Davidson, Forsyth	27843	Orig3n	Edgecombe, Halifax, Martin	28328	TBD	Sampson
27209	TBD	Montgomery, Moore	27844	Orig3n	Franklin, Halifax, Nash, Warren	28333	Orig3n	Wayne
27214	Op9 - TBD	Guilford, Rockingham	27845	Vidant	Halifax, Northampton	28334	Orig3n	Cumberland, Harnett, Johnston, Sampson
27229	TBD	Montgomery, Moore, Richmond	27846	Orig3n	Beaufort, Bertie, Martin, Washington	28339	Orig3n	Cumberland, Harnett
27242	TBD	Montgomery, Moore	27847	TBD	Bertie, Halifax, Hertford, Northampton	28340	Orig3n	Robeson
27253	Op9 - TBD	Alamance, Chatham, Orange	27849	TBD	Bertie, Halifax, Martin	28341	Orig3n	Duplin, Sampson
27260	Op9 - TBD	Davidson, Guilford, Randolph	27850	Vidant	Halifax, Northampton, Warren	28344	Orig3n	Cumberland, Sampson
27265	Op9 - TBD	Davidson, Forsyth, Guilford	27853	Orig3n	Northampton	28347	TBD	Moore, Richmond, Scotland
27281	TBD	Montgomery, Moore, Richmond	27855	Vidant	Hertford, Northampton	28357	Orig3n	Hoke, Robeson
27284	Op9 - TBD	Davidson, Forsyth, Guilford	27857	Orig3n	Bertie, Halifax, Martin	28364	Orig3n	Hoke, Robeson, Scotland
27302	Op9 - TBD	Alamance, Caswell, Orange	27862	Orig3n	Hertford, Northampton	28366	Orig3n	Johnston, Sampson, Wayne
27316	TBD	Chatham, Randolph	27864	Vidant	Edgecombe	28369	Orig3n	Columbus, Robeson
27325	TBD	Moore, Randolph	27866	Orig3n	Northampton	28377	Orig3n	Hoke, Robeson, Scotland
27330	Op9 - TBD	Chatham, Harnett, Lee, Moore	27869	Vidant	Bertie, Halifax, Hertford, Northampton	28383	Orig3n	Robeson
27332	Orig3n	Harnett, Lee, Moore	27872	Orig3n	Bertie, Hertford, Northampton	28384	TBD	Bladen, Cumberland, Robeson
27405	Op9 - TBD	Guilford	27874	Orig3n	Bertie, Edgecombe, Halifax, Martin, Northampton	28386	Orig3n	Hoke, Robeson
27406	Op9 - TBD	Guilford	27876	Orig3n	Northampton	28390	Orig3n	Cumberland, Harnett
27407	Op9 - TBD	Guilford	27878	Orig3n	Edgecombe, Nash, Wilson	28393	Orig3n	Duplin, Sampson
27501	Orig3n	Harnett, Johnston, Wake	27880	Orig3n	Johnston, Nash, Wilson	28399	Orig3n	Bladen, Cumberland
27505	Orig3n	Harnett, Lee	27884	Orig3n	Pitt	28423	Orig3n	Bladen, Brunswick, Columbus
27509	Op9 - TBD	Durham, Granville	27888	Orig3n	Greene, Pitt, Wilson	28424	Orig3n	Columbus
27511	Op9 - TBD	Wake	27890	Vidant	Halifax, Northampton	28434	Orig3n	Bladen, Columbus
27521	Orig3n	Harnett, Johnston	27897	Vidant	Hertford, Northampton	28439	Orig3n	Columbus, Robeson
27524	Orig3n	Johnston, Sampson, Wayne	27910	Vidant	Bertie, Hertford, Northampton	28441	Orig3n	Bladen, Cumberland, Sampson
27529	Orig3n	Johnston, Wake	27920	TBD	Dare	28442	Orig3n	Columbus
27531	Orig3n	Wayne	27922	Orig3n	Bertie, Gates, Hertford	28444	Op9 - TBD	Bladen, Duplin, Sampson
27539	Op9 - TBD	Wake	27924	Orig3n	Bertie, Chowan, Hertford	28447	Orig3n	Bladen, Pender, Sampson
27542	Orig3n	Johnston, Wayne, Wilson	27938	Orig3n	Chowan, Gates, Hertford	28448	Orig3n	Bladen, Columbus, Pender
27545	Op9 - TBD	Wake	27942	Orig3n	Bertie, Chowan, Gates, Hertford	28452	Orig3n	Brunswick
27557	Orig3n	Johnston, Nash, Wilson	27953	Orig3n	Dare, Hyde, Tyrrell	28453	Orig3n	Duplin, Sampson
27559	Op9 - TBD	Chatham, Harnett, Lee	27957	Orig3n	Bertie, Chowan	28456	TBD	Bladen, Brunswick, Columbus, Pender
27569	Orig3n	Johnston, Wayne	27964	Orig3n	Currituck, Dare	28457	Orig3n	New Hanover, Pender
27576	Orig3n	Johnston	27967	Orig3n	Bertie, Hertford	28458	Orig3n	Duplin, Sampson
27577	Orig3n	Johnston	27968	Orig3n	Dare	28464	Orig3n	Duplin
27591	Orig3n	Johnston, Wake	27970	Orig3n	Bertie, Tyrrell, Washington	28466	Orig3n	Duplin, Onslow, Pender, Sampson
27597	Orig3n	Franklin, Johnston, Nash, Wake	27979	Orig3n	Camden, Gates, Pasquotank, Perquimans	28508	Orig3n	Duplin, Lenoir
27601	Op9 - TBD	Wake	27981	Orig3n	Dare	28518	Orig3n	Duplin, Onslow
27604	Op9 - TBD	Wake	28081	TBD	Cabarrus, Iredell, Rowan	28521	Orig3n	Duplin, Onslow
27610	Orig3n	Johnston, Wake	28083	TBD	Cabarrus, Rowan	28526	Orig3n	Craven, Jones, Lenoir, Pitt
27701	Op9 - TBD	Durham	28134	Op9 - TBD	Mecklenburg	28533	Orig3n	Craven
27703	Op9 - TBD	Durham, Wake	28174	TBD	Union	28543	Orig3n	Onslow
27704	Op9 - TBD	Durham, Granville, Wake	28205	Op9 - TBD	Mecklenburg	28572	Orig3n	Duplin, Jones, Lenoir, Onslow
27801	Orig3n	Edgecombe, Nash, Wilson	28206	Op9 - TBD	Mecklenburg	28578	Orig3n	Duplin, Lenoir, Wayne
27803	Orig3n	Edgecombe, Nash, Wilson	28208	Op9 - TBD	Mecklenburg	28580	Orig3n	Greene, Lenoir
27805	Orig3n	Bertie, Hertford, Northampton	28210	Op9 - TBD	Mecklenburg	28582	Orig3n	Carteret, Jones, Onslow
27807	Orig3n	Nash, Wilson	28212	Op9 - TBD	Mecklenburg	28631	TBD	Alleghany, Ashe
27809	Orig3n	Edgecombe, Nash	28213	Op9 - TBD	Cabarrus, Mecklenburg	28636	TBD	Alexander, Iredell
27812	Orig3n	Edgecombe, Martin, Pitt	28214	Op9 - TBD	Gaston, Mecklenburg	28663	TBD	Alleghany, Ashe
27814	Orig3n	Beaufort, Craven	28215	Op9 - TBD	Cabarrus, Mecklenburg	28666	Op9 - TBD	Burke
27818	Orig3n	Gates, Hertford, Northampton	28216	Op9 - TBD	Gaston, Mecklenburg	28725	TBD	Jackson
27819	Vidant	Edgecombe	28217	Op9 - TBD	Mecklenburg	28726	TBD	Henderson
27820	Orig3n	Northampton	28273	Op9 - TBD	Mecklenburg	28733	TBD	Graham, Swain
27821	Orig3n	Beaufort				28736	TBD	Jackson
						28909	TBD	Clay
						28318	Orig3n	Cumberland, Sampson
						27530	Orig3n	Wayne